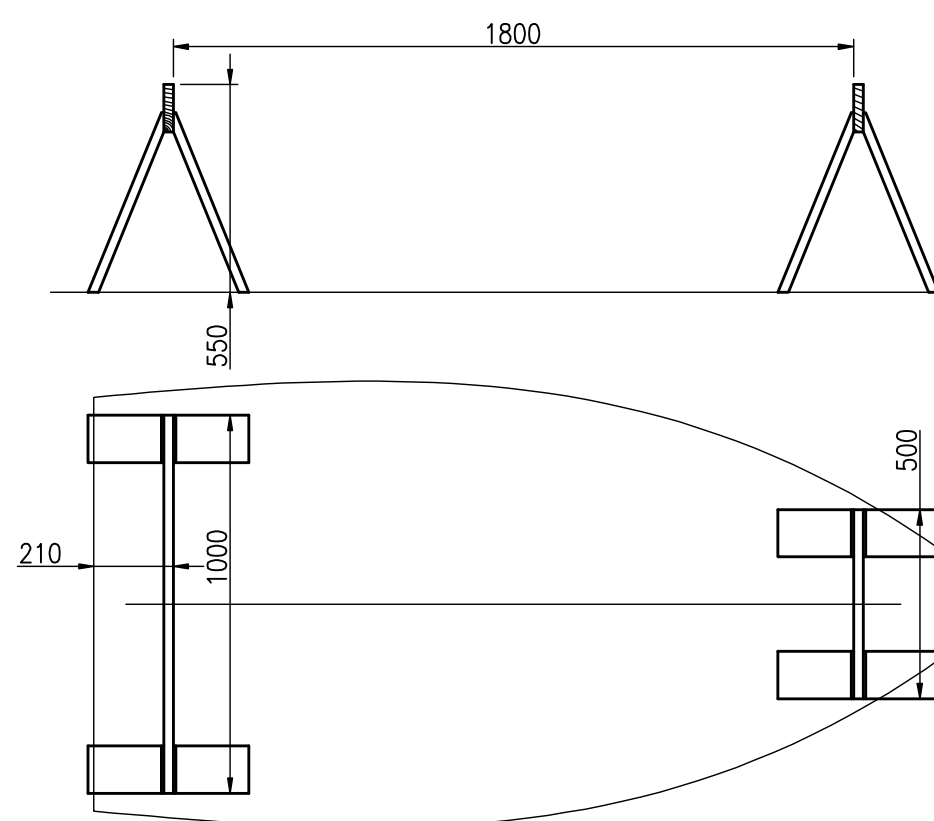
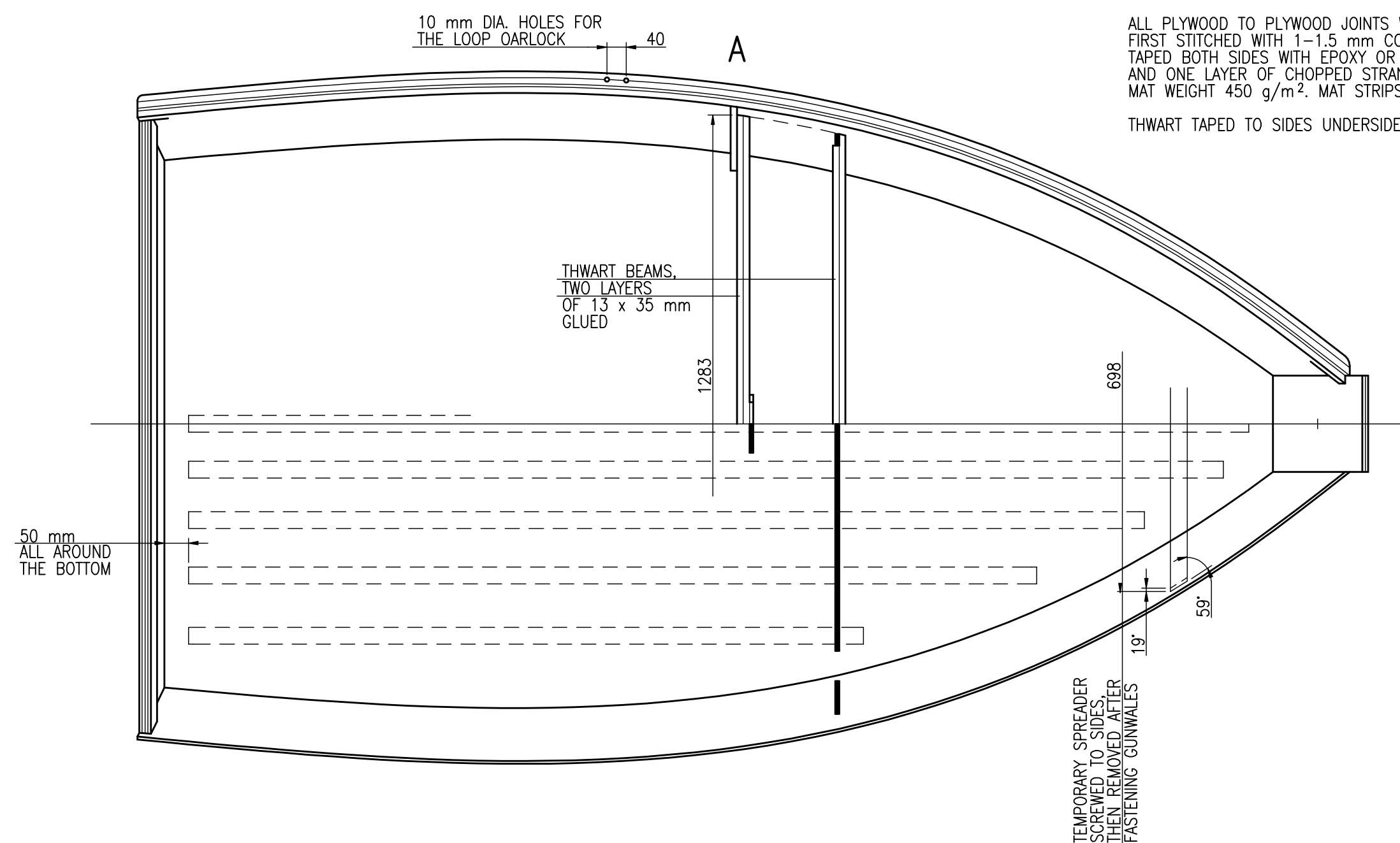


ALL OTHER PLYWOOD TO TIMBER JOINTS GLUED
AND NAILED WITH 1.2 x 20 mm NAILS SPACED 50 mm

ALL NAILS OF BRASS. ALL SCREWS OF BRASS
OR STAINLESS STEEL

ALL PLYWOOD TO PLYWOOD JOINTS WITHOUT TIMBER
FIRST STITCHED WITH 1-1.5 mm COPPER WIRE, THEN
TAPED BOTH SIDES WITH EPOXY OR POLYESTER RESIN
AND ONE LAYER OF CHOPPED STRAND MAT EACH SIDE.
MAT WEIGHT 450 g/m². MAT STRIPS WIDTH 100 mm

THWART TAPED TO SIDES UNDERSIDE ONLY



BUILDING STOCK
SCREWED OF LUMBER OR 22 mm PARTICLEBOARD
RESAWN INTO 125 mm WIDE PANELS

BOTTOM SET UP ON THE BUILDING STOCK
AND POSITIONED TO THE AFT EDGE, THEN
TEMPORARILY FASTENED WITH TWO SCREWS
TO EACH TRESTLE BEAM

MAIN DIMENSIONS

LENGTH OVERALL	L _{OA}	2.50 m
LENGTH OF WATERLINE	L _{WL}	2.30 m
BEAM	B	1.40 m
BEAM OF WATERLINE	B _{WL}	1.23 m
DRAFT	T _C	0.10 m
FREEBOARD AFT	F _A	0.35 m
FREEBOARD FORWARD	F _F	0.425 m
VOLUME DISPLACEMENT	V	0.19 m ³

2.5m

HULL CONSTRUCTION
SHEET 25.2/2, SIZE A2
SCALE 1:10, 1:20

RADOSŁAW WERSZKO
JANUARY 2016, DECEMBER 2020, JULY 2021