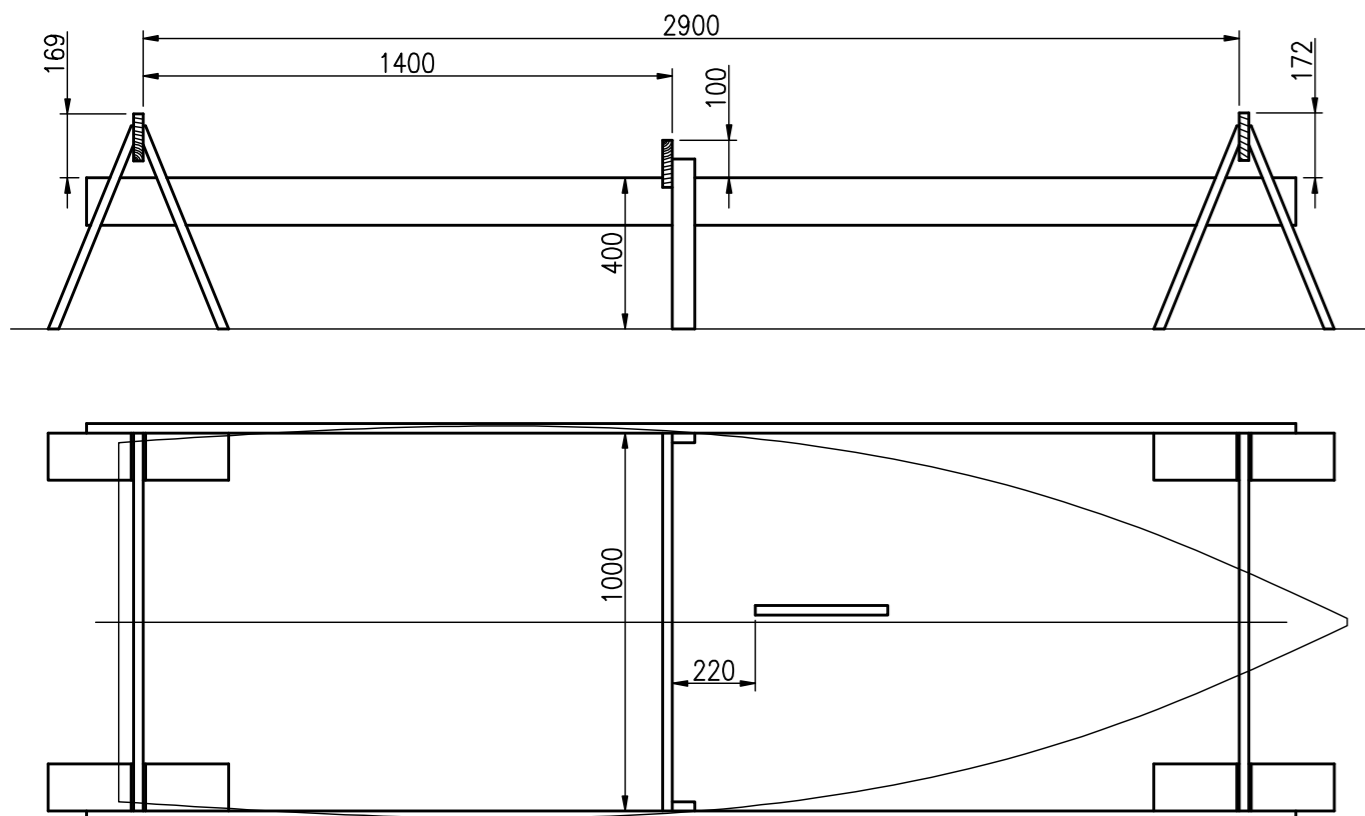


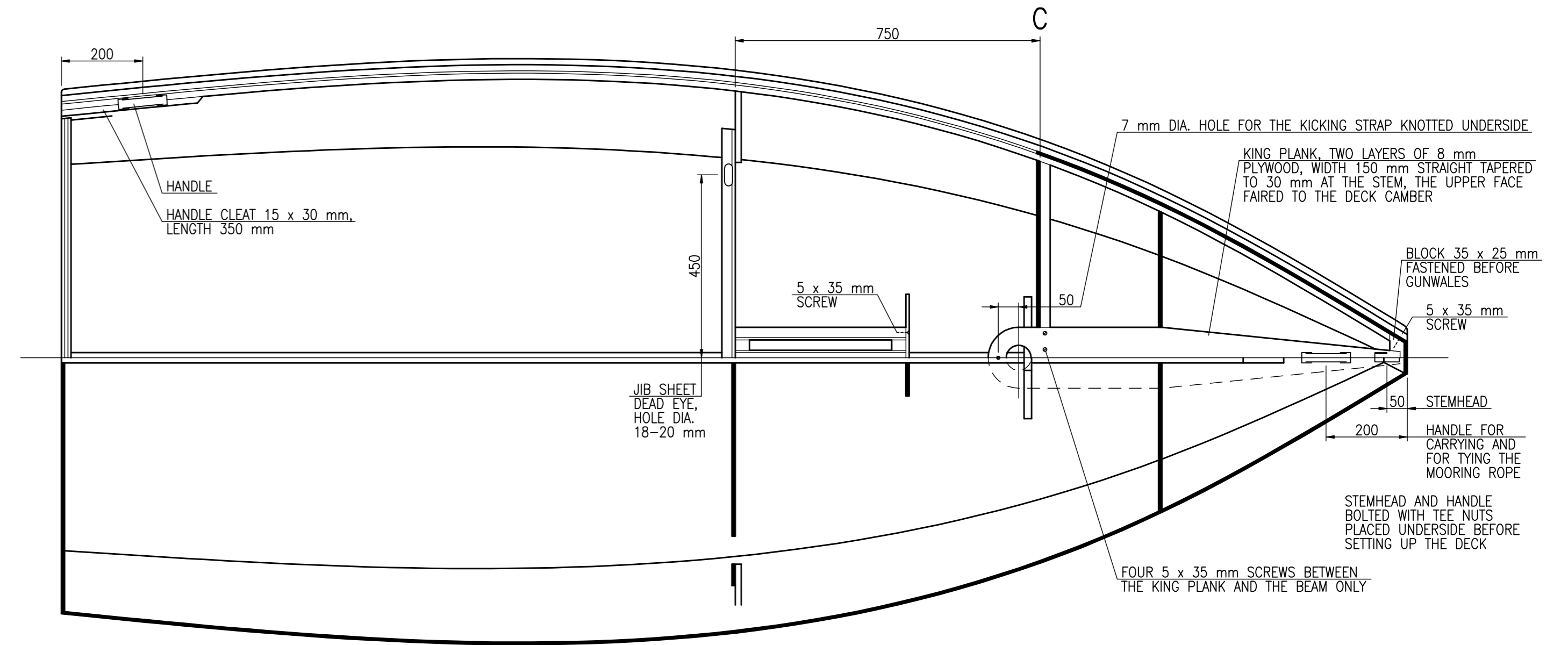
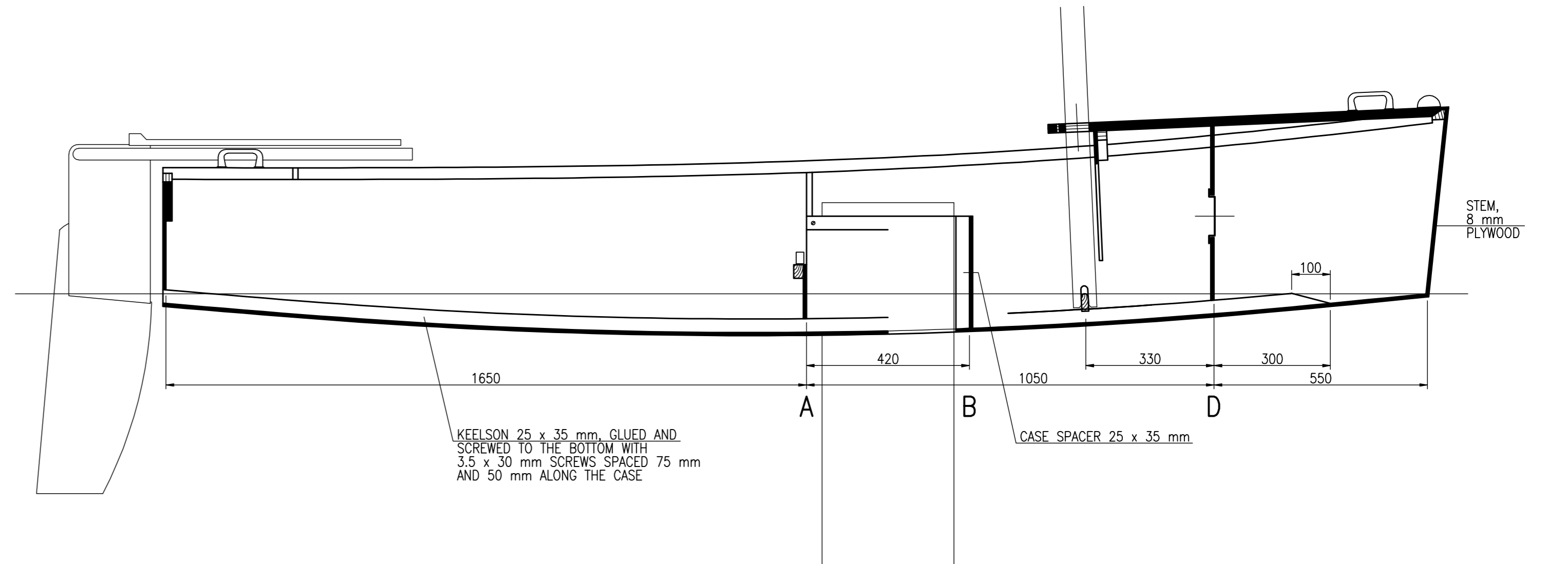
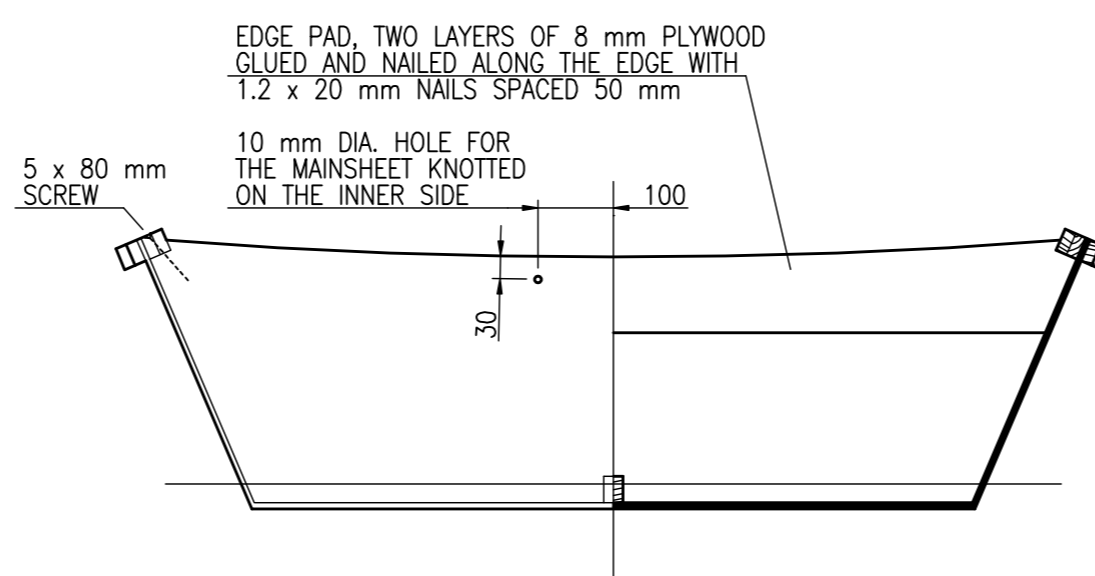
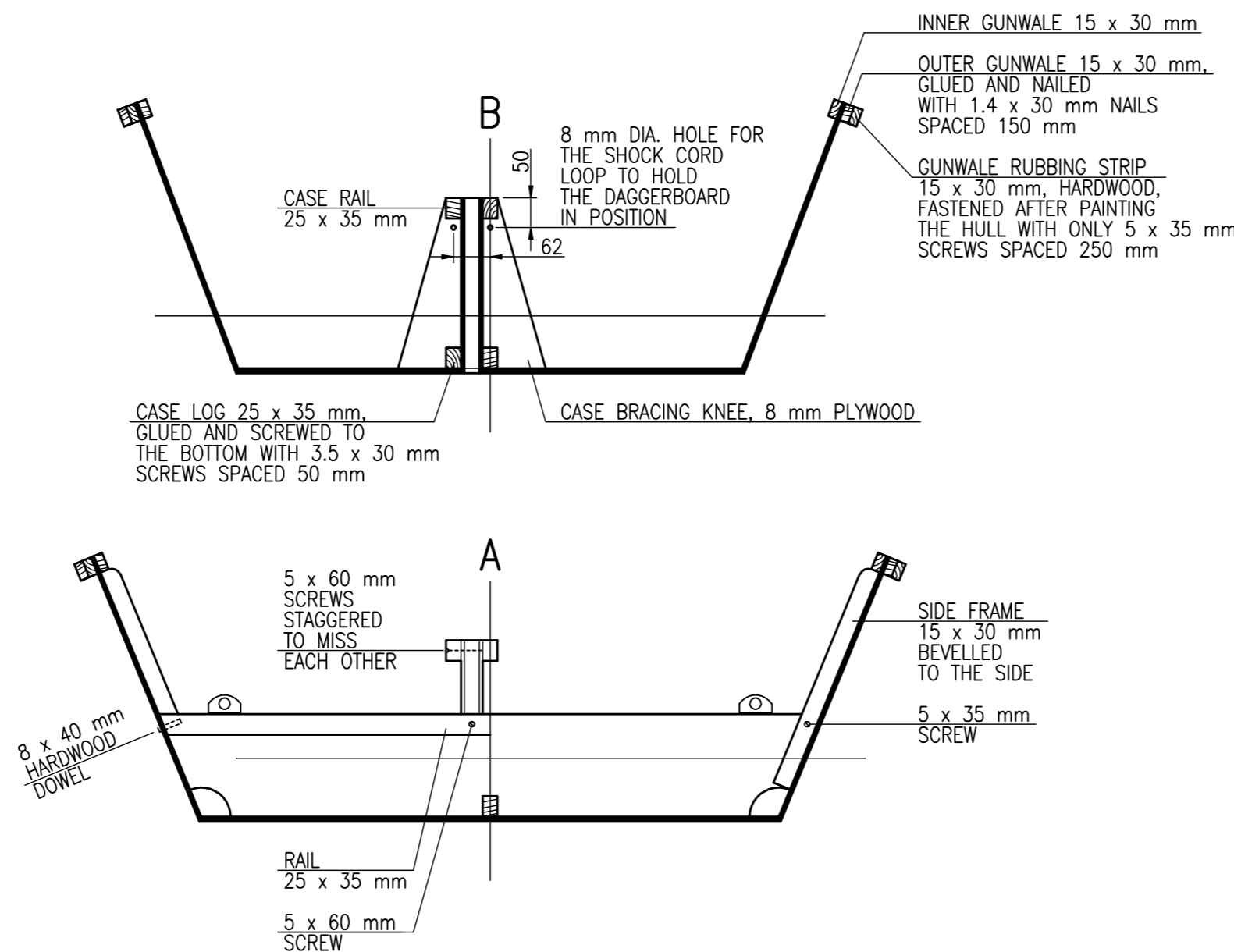
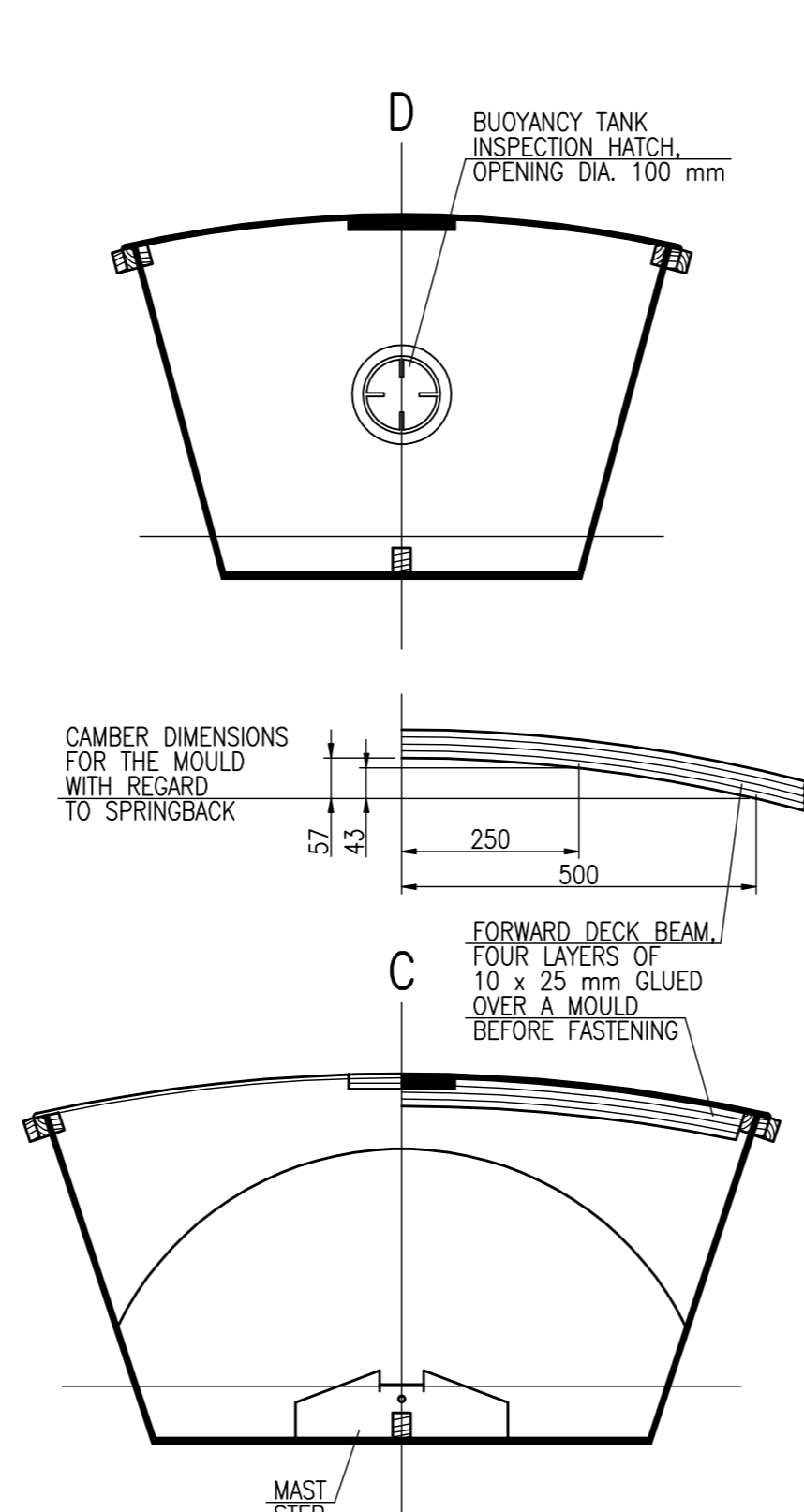
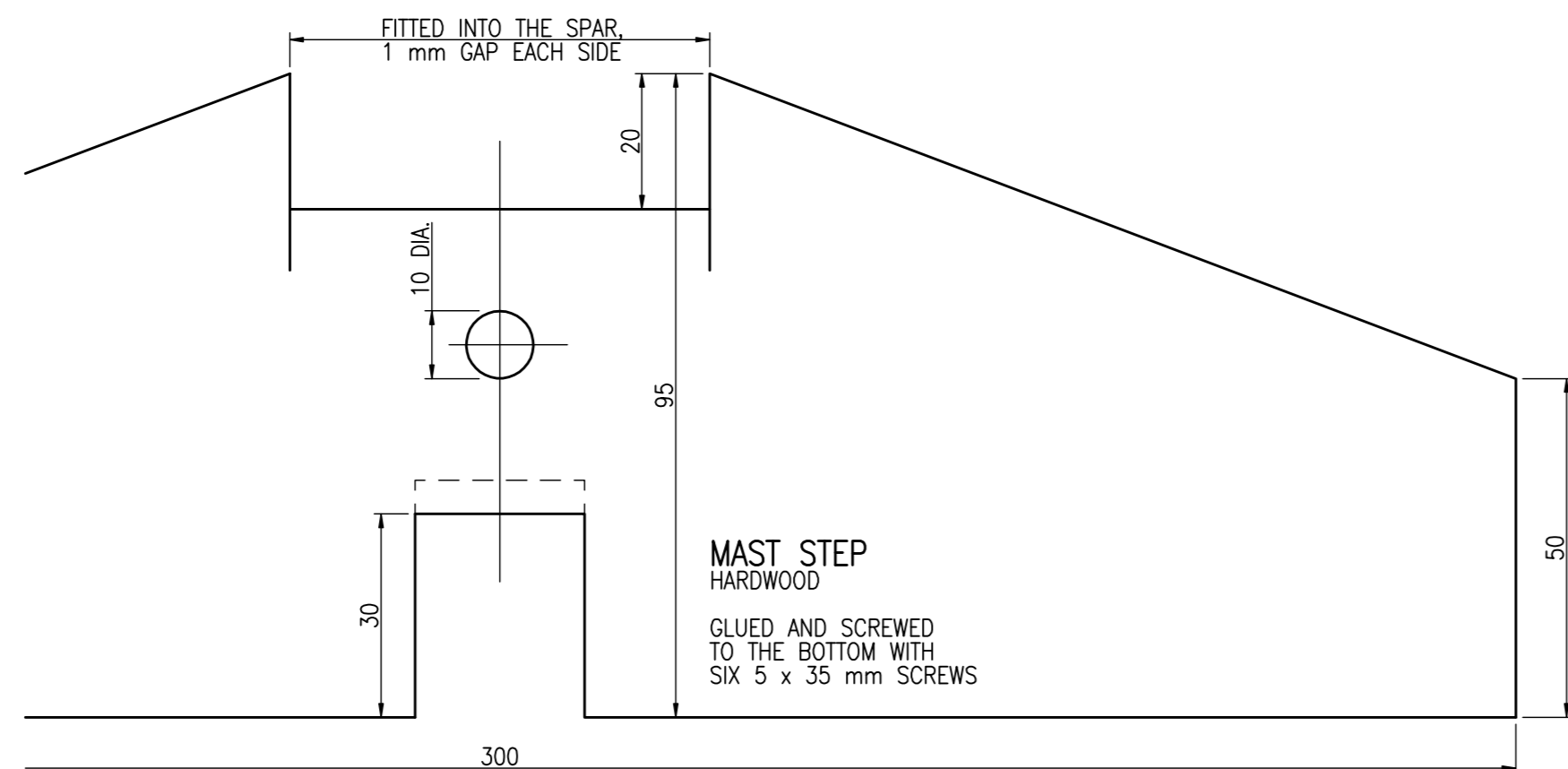
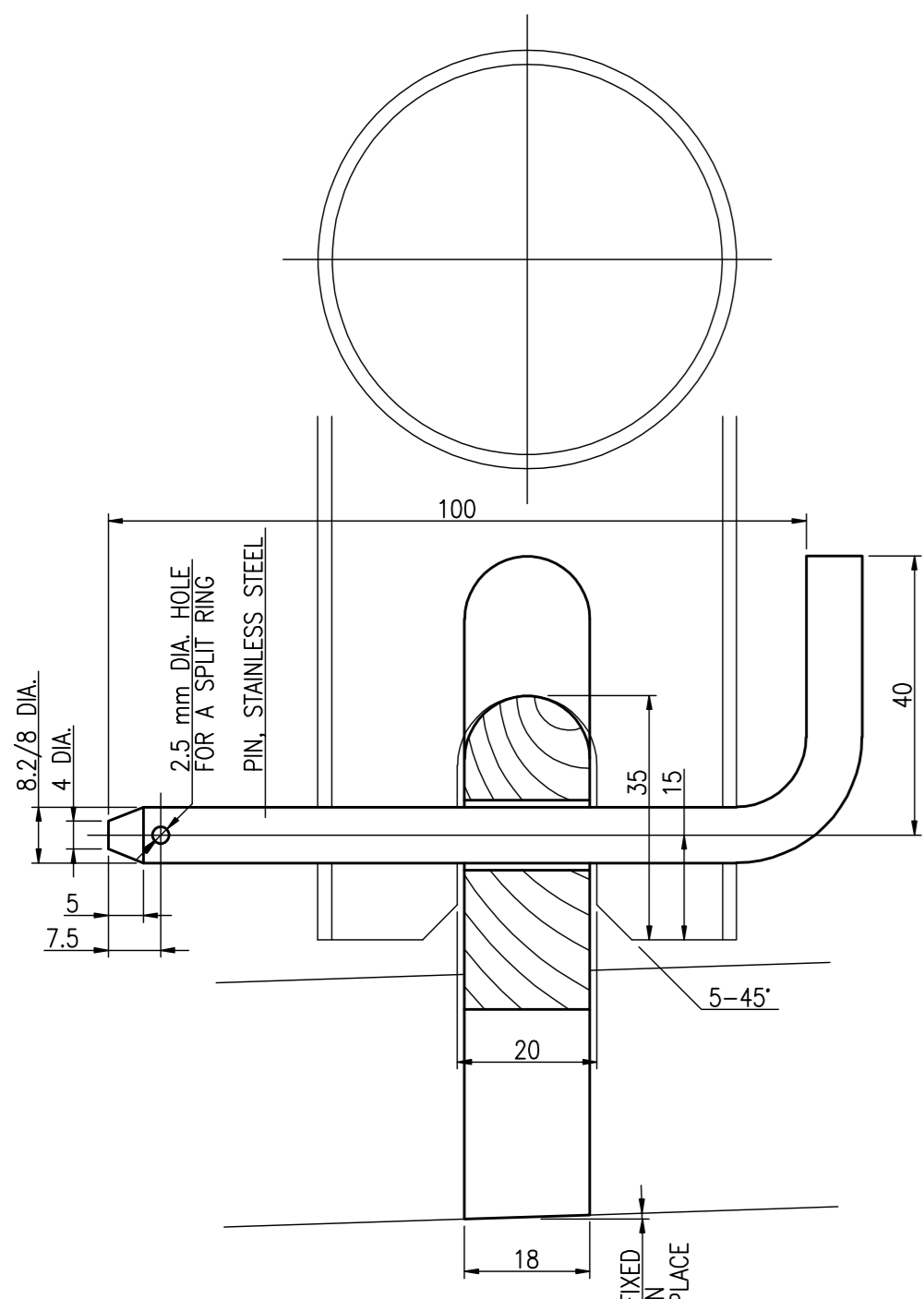
PINTLE AND GUDGEON
STAINLESS STEEL

GUDGEONS FASTENED TO THE TRANSOM WITH M5 STAINLESS STEEL BOLTS



BUILDING STOCK
SCREWED OF LUMBER OR 22 mm PARTICLEBOARD RESAWN INTO 125 mm WIDE PANELS

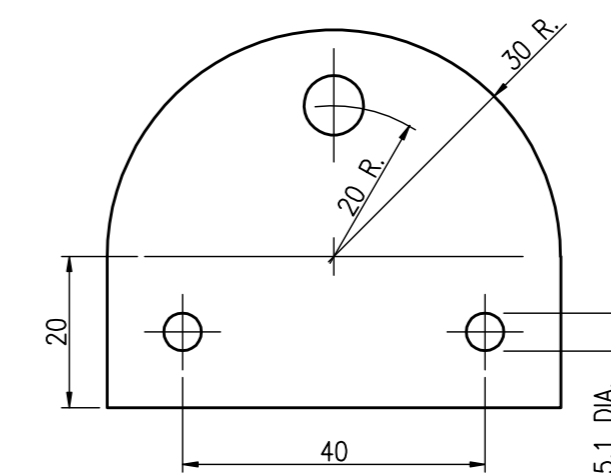
BOTTOM SET UP ON THE BUILDING STOCK AND POSITIONED TO THE AFT END OF THE DAGGERBOARD CASE SLOT, THEN TEMPORARILY FASTENED WITH TWO SCREWS TO THE STOCK AMIDSHIP BEAM



ALL OTHER PLYWOOD TO TIMBER JOINTS GLUED AND NAILED WITH 1.2 x 20 mm NAILS SPACED 50 mm

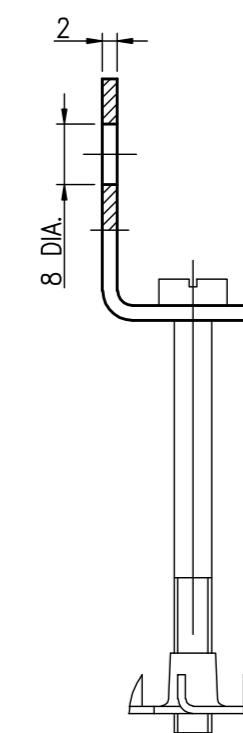
ALL NAILS OF BRASS, ALL SCREWS OF BRASS OR STAINLESS STEEL

ALL PLYWOOD TO PLYWOOD JOINTS WITHOUT TIMBER, FIRST STITCHED WITH 1-1.5 mm COPPER WIRE, THEN TAPED BOTH SIDES WITH EPOXY OR POLYESTER RESIN AND ONE LAYER OF CHOPPED STRAND MAT EACH SIDE. MAT WEIGHT 450 g/m², MAT STRIPS WIDTH 100 mm



STEMHEAD
STAINLESS STEEL

FASTENED WITH M5 STAINLESS STEEL BOLTS WITH TEE NUTS



MAIN DIMENSIONS

LENGTH OVERALL	L _{OA}	3.30 m
LENGTH OF WATERLINE	L _{WL}	3.25 m
BEAM	B	1.40 m
BEAM OF WATERLINE	B _{WL}	1.12 m
DRAFT	T _C	0.10 m
DRAFT DAGGERBOARD DOWN	T	0.70 m
FREEBOARD AFT	F _A	0.325 m
FREEBOARD FORWARD	F _F	0.475 m
VOLUME DISPLACEMENT	V	0.21 m ³

3.3m

HULL CONSTRUCTION
SHEET 33.2/4, SIZE A1
SCALE 1:1, 1:5, 1:10, 1:20

RADOSŁAW WERSZKO
MARCH 2024