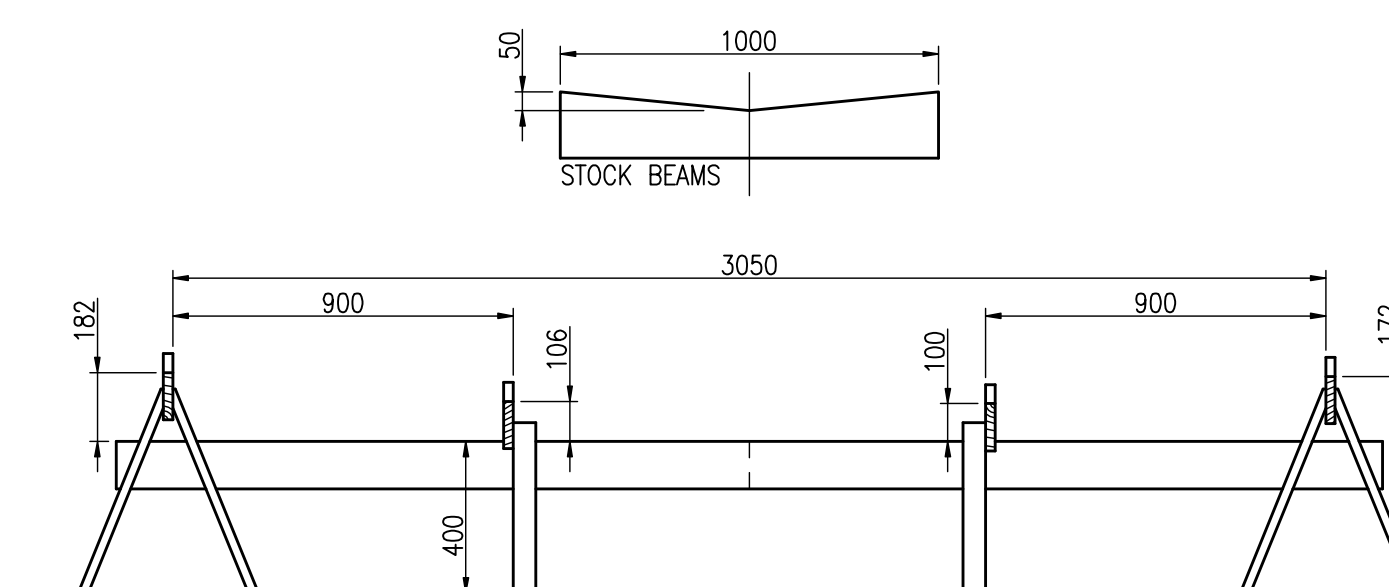


ALL OTHER PLYWOOD TO TIMBER JOINTS GLUED AND NAILED WITH 1.2 x 20 mm NAILS SPACED 50 mm

ALL PLYWOOD PADS AND STRIPS GLUED AND NAILED WITH 1.2 x 13 mm NAILS SPACED 50 mm, FILED IF GONE THROUGHOUT

ALL NAILS OF BRASS. ALL SCREWS OF BRASS OR STAINLESS STEEL

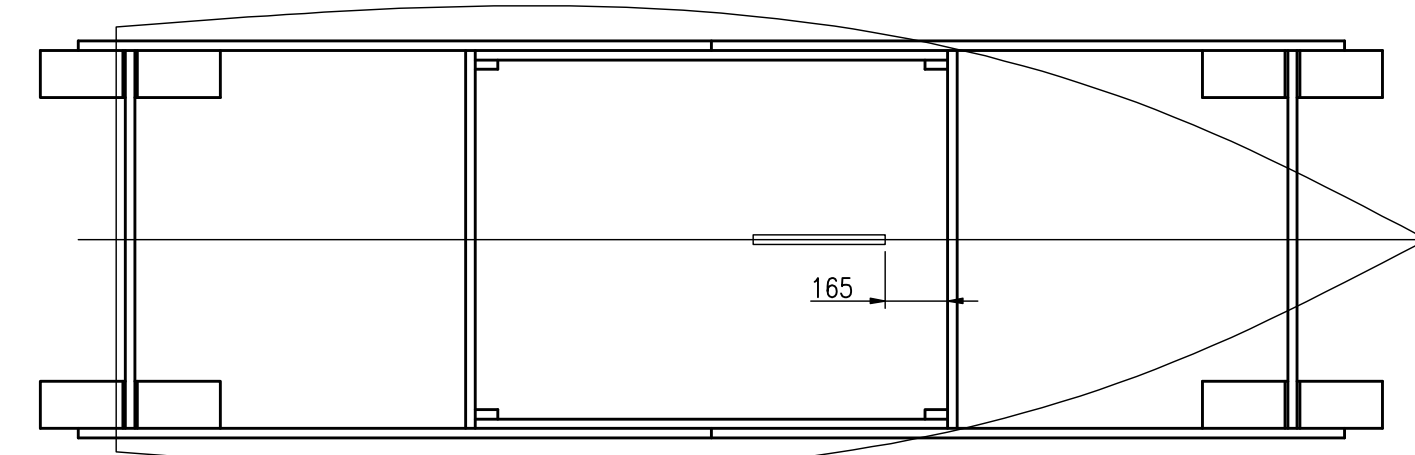
ALL PLYWOOD TO PLYWOOD JOINTS WITHOUT TIMBER, FIRST STITCHED WITH 1-1.5 mm COPPER WIRE, THEN TAPED BOTH SIDES WITH EPOXY OR POLYESTER RESIN AND ONE LAYER OF CHOPPED STRAND MAT EACH SIDE. MAT WEIGHT 450 g/m². MAT STRIPS WIDTH 100 mm



**BUILDING STOCK**  
SCREWED OF LUMBER OR 22 mm PARTICLEBOARD RESAWN INTO 125 mm AND 175 mm WIDE PANELS

BOTTOM SET UP ON THE BUILDING STOCK AND POSITIONED TO THE FORWARD END OF THE DAGGERBOARD CASE SLOT, THEN TEMPORARILY FASTENED WITH FOUR SCREWS TO THE STOCK AMIDSHIP BEAMS

AFT AND FORWARD KEELSON MADE OF ONE PIECE OF TIMBER NARROWED TO 25 mm IN THE DAGGERBOARD CASE PLACE, PART ALONG THE CASE SLOT WRAPPED WITH AN ADHESIVE TAPE TO PREVENT GLUING, THEN THIS PART REMOVED WHILE PREPARING THE HULL TO PAINT



3.5m

HULL CONSTRUCTION  
SHEET 35.3/5, SIZE A1  
SCALE 1:1, 1:10, 1:20

RADOSŁAW WERSZKO  
SEPTEMBER 2012